



The Right Drive Platform For Your Application

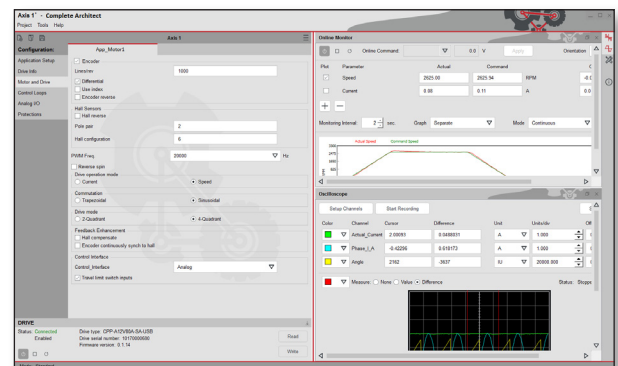
ElectroCraft's CompletePower™ Plus Universal Drive takes performance, efficiency and flexibility to the next level, utilizing state-of-the-art digital drive technology combined with an intuitive and highly configurable user interface. Perfect for a wide range of industrial, commercial market, and consumer product applications. There are four standard capacities in the model lineup, plus customized versions are offered to meet large volume OEM requirements.

- Compatible with Brushless DC motors, PMDC Brush motors, and Stepper motors (Open-Loop and Closed-Loop) from 12 to 80 VDC and up to 24A continuous/60A peak output current.
- Modes of operation include analog speed control, analog torque control or step & direction positioning for Brushless, PMDC Brush and Closed-Loop Steppers.
- Sine-wave commutation for brushless motors using either hall sensors or encoder feedback.
- Advanced Field Oriented Control (FOC) of Brushless and Closed-Loop Stepper motors provides high dynamic response resulting in a robust motor controller with low torque ripple that produces smoother, more efficient motion!
- Open-loop stepper motors support single step up to 256 micro-steps (1MHz max step rate @50% ± 10% duty-cycle).
- Encoder feedback or IxR compensation is available for PMDC Brush motors.
- Easy setup and configuration via USB interface with ElectroCraft Complete Architect™ - Windows-based software.
 - Easy to configure and tune ElectroCraft motors by simply selecting the standard motor model from the included database!
 - Built-in Tutorials help users get started without having to read a manual.
 - Help Function provides easy to understand explanations for parameter settings.
 - Extensive diagnostic and monitoring tools significantly reduce the time involved in setup, tuning and troubleshooting.



ELECTRO-CRAFT

CompletePower™ Plus
UNIVERSAL DRIVE



ElectroCraft

CompleteArchitect™

ElectroCraft CompletePower™ Plus – Universal Drive Configuration Software

ElectroCraft's PRO Series takes drive performance and functionality to the next level by incorporating a fully programmable motion controller with built-in networking! Whether you are controlling a single drive in a stand-alone application or multiple drives in a networked system, configuration and programming is easy using ElectroCraft's intuitive and powerful MotionPRO Suite software.

PRO Series Features:

- Compatible with Brushless, Brush, or Stepper motors
- PCB mount or stand-alone chassis configurations
- Voltage range from 12 to 80 VDC
- Output current up to 20A continuous, 40A peak
- Built-in I/O, hall sensor, tach & encoder feedback
- RS232, CAN bus or EtherCAT® (CoE) networks

Operating Modes:

- As a single-axis motion controller, autonomously running the program residing in its non-volatile memory.
- As an intelligent slave executing motion sequences triggered by input lines.
- As part of a multi-axis, distributed motion control solution in either stand alone or slave configurations.
- As an intelligent slave executing motion sequences triggered by commands received via RS-232, EtherCAT or CAN bus communication.

ElectroCraft Integrated Motor Drives

ElectroCraft's PRO Series is also available as part of an integrated motor drive controller solution!

- Available in NEMA 17 and 23 frame sizes
- Multiple configurations available, including:
 - Brushless DC motor (RP-Series)
 - Stepper motor (TPP-Series)
 - Stepper-Type Linear Actuator (APPS-Series)
- Same motion control features and functionality as PRO Series
- Customized solutions available for large volume OEM requirements

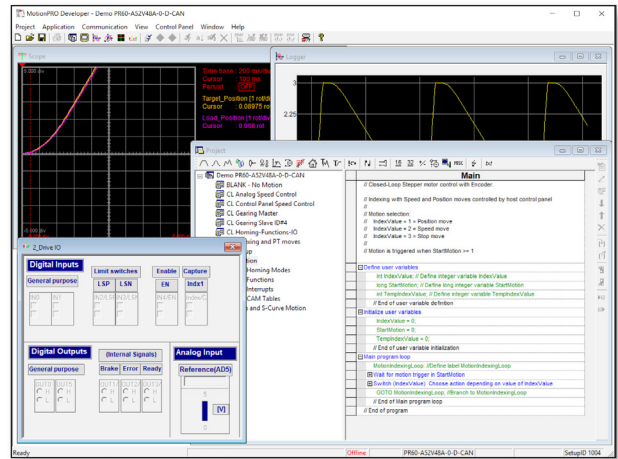


Your Genius. Our Drive.

ElectroCraft, Inc.
2 Marin Way, Suite 3
Stratham, NH 03885-2578 USA

Tel: (844) 565-6144

Email: sales@electrocraft.com
www.electrocraft.com



ElectroCraft
MotionPRO Software

