

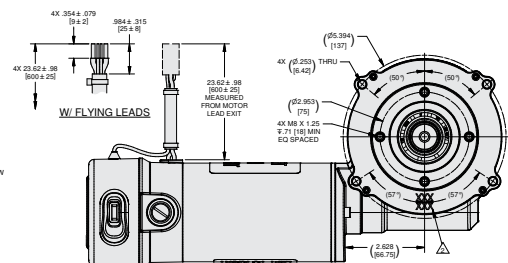
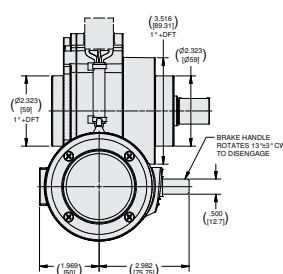
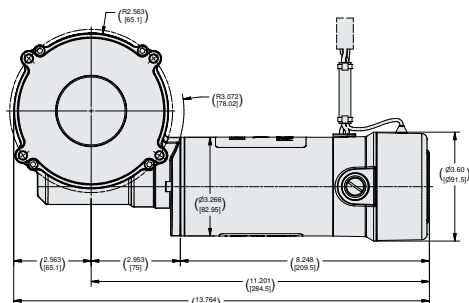
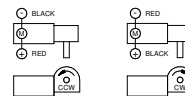
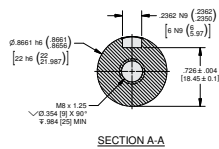
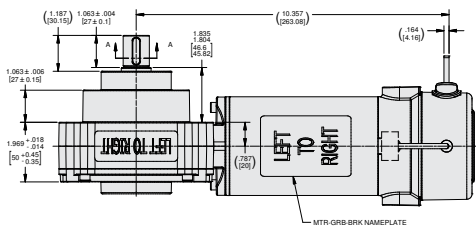
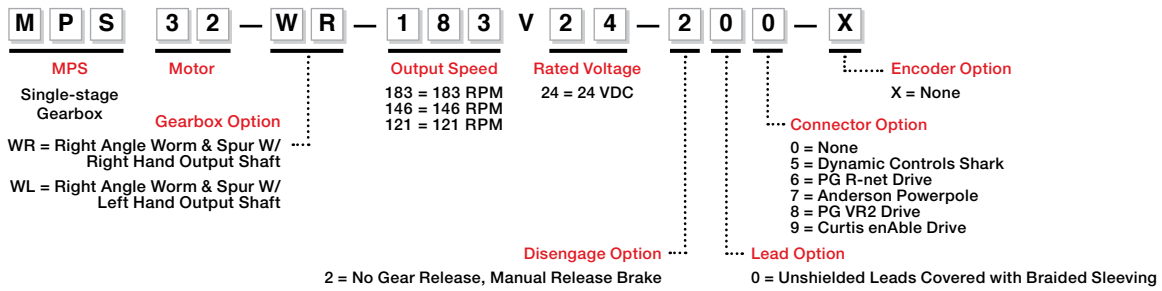
ElectroCraft's MPS32 integrates a 2-pole PMDC brush motor with a single-stage right-angle worm gearbox, designed for medical or general mobility applications. The MPS32 is a unique design that delivers high torque and increased efficiency, while providing smooth, reliable and quiet operation. ElectroCraft MobilePower™ gearmotors feature an integrated design that provides increased performance and reliability at an affordable price compared to traditional motor/gearbox combinations. As with all ElectroCraft products, MobilePower™ gearmotors are customizable to meet specific application requirements.

Features:

- Smooth, efficient motion
- Durable and highly reliable integrated worm-gear design
 - Suitable for uneven terrain and curb-climbing
- High starting torque:
 - Peak starting torque up to 113.7Nm
 - Continuous torque up to 20.4Nm
 - 15-minute continuous torque up to 39.2Nm



- Configurable or completely customizable designs
 - Motor, gearbox, brake, encoder, cabling
- Typical applications:
 - Medical Mobility Chairs
 - Stair Lifts
 - Industrial traction applications
 - Industrial lifts
 - Automated Guided Vehicles
 - Autonomous Mobile Robots



MPS32 ElectroCraft MobilePower™

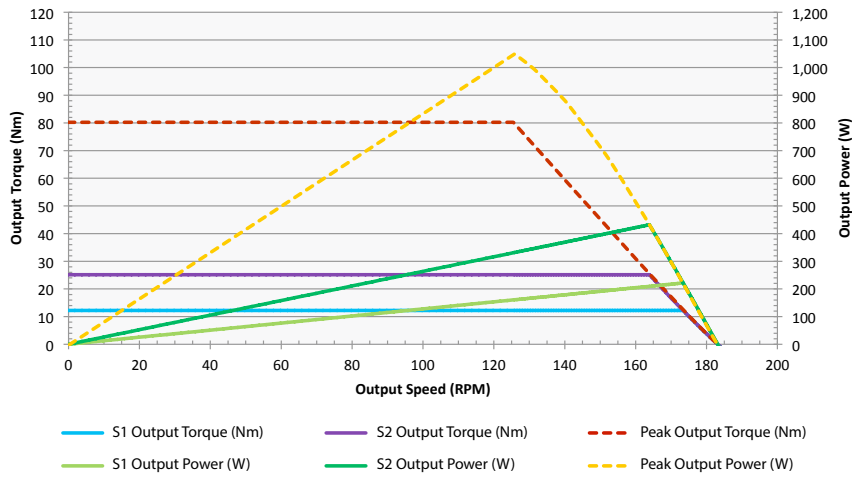
Geared Motor

Longer battery life - More power

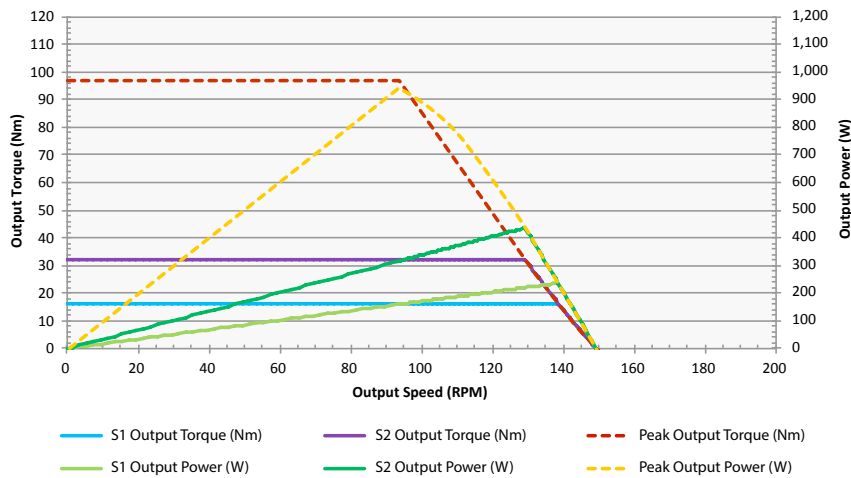


MPS32 Performance

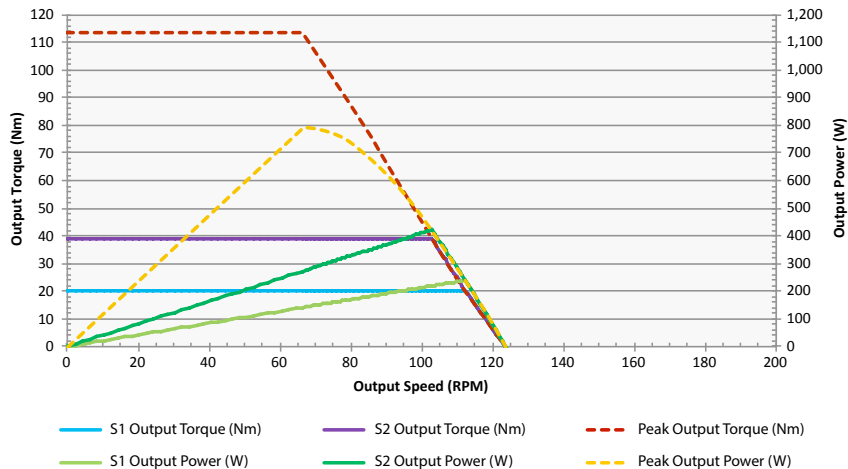
MPS32-W#-183V24-20#-X 183 RPM



MPS32-W#-146V24-20#-X 146 RPM



MPS32-W#-121V24-20#-X 121 RPM



Your Genius. Our Drive.

ElectroCraft, Inc.
2 Marin Way, Suite 3
Stratham, NH 03885-2578 USA

Tel: (844) 565-6144

Email: sales@electrocraft.com
www.electrocraft.com

MPS32 ElectroCraft MobilePower™ Geared Motor

Longer battery life - More power



MPS32 Motor Parameters

Winding/speed	183	146	121
Gear Ratio	29.00:1		
Operating Voltage (VDC)	24		
No Load Speed (RPM)	183	146	121
Peak Torque (5 sec) (Nm)	79.8	96.6	113.7
Peak Current (5 sec) (Amps)	80.0		
Peak Power (5 sec) (Watts)	1051	944	791
S2 Torque (15 min) (Nm)	25.2	32.3	39.2
S2 Current (15 min) (Amps)	28.0		
S2 Power (15 min) (Watts)	432	436	422
S1 Torque (Continuous) (Nm)	12.2	16.3	20.4
S1 Current (Continuous) (Amps)	16.0		
S1 Power (Continuous) (Watts)	222	237	240
Torque Constant (Nm/A)	0.0424	0.0528	0.0633
Voltage Constant (V/KRPM)	4.45	5.53	6.63
Motor Inertia (Armature) (kg.mm ²)	442.96		
Motor Winding Resistance (Ohms)	0.136	0.141	0.182
Motor Winding Inductance (µH)	94	144	197
Motor Max Winding Temp (°C)	155		
Motor Poles	2		
Motor Mass (kg)	6.67		

Notes:

Gear Motor specifications (torque, current, power) are reference values based on 25°C operating temperature.

Do not apply maximum current for more than 5 seconds or more than twice without 10 minutes between cycles



Your Genius. Our Drive.

ElectroCraft, Inc.
2 Marin Way, Suite 3
Stratham, NH 03885-2578 USA

Tel: (844) 565-6144

Email: sales@electrocrafter.com
www.electrocrafter.com